



## Retail Pro Integration

**Updates Inventory-** automatically synchronizes with the 24Seven Cart web store to a minute level accuracy.

**Creates Categories** - and product directly within the 24Seven Cart admin panel, which enables flexibility

**Profiles of shoppers-** are imported directly into 24Seven Cart and any duplicate records are removed.

**Store Specific Data** - is easily differentiated from physical store locations

**Sales Orders** - are directly downloaded into Retail Pro for fulfillment

**Orders** – received from marketplaces such as Amazon & eBay can be downloaded to the 24SevenCart based web store database and then are downloaded to Retail Pro POS.

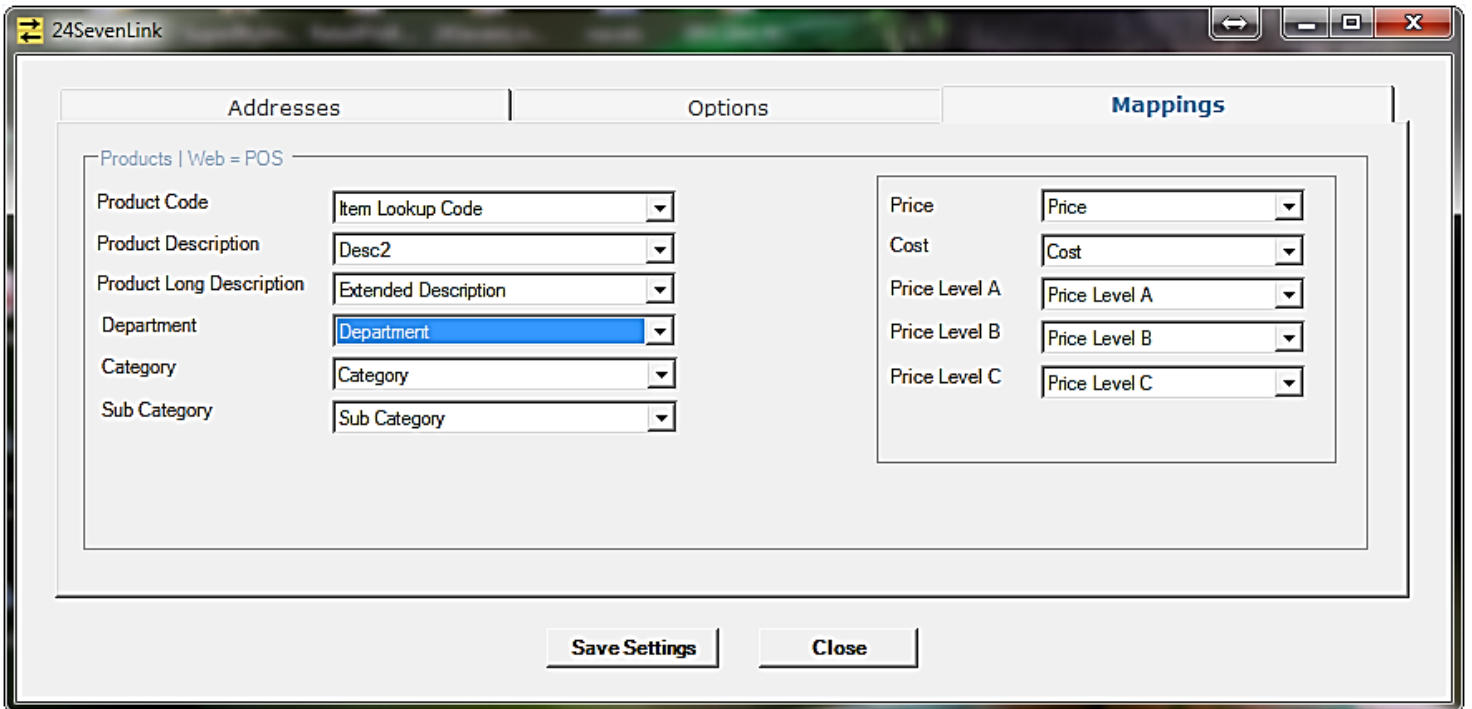
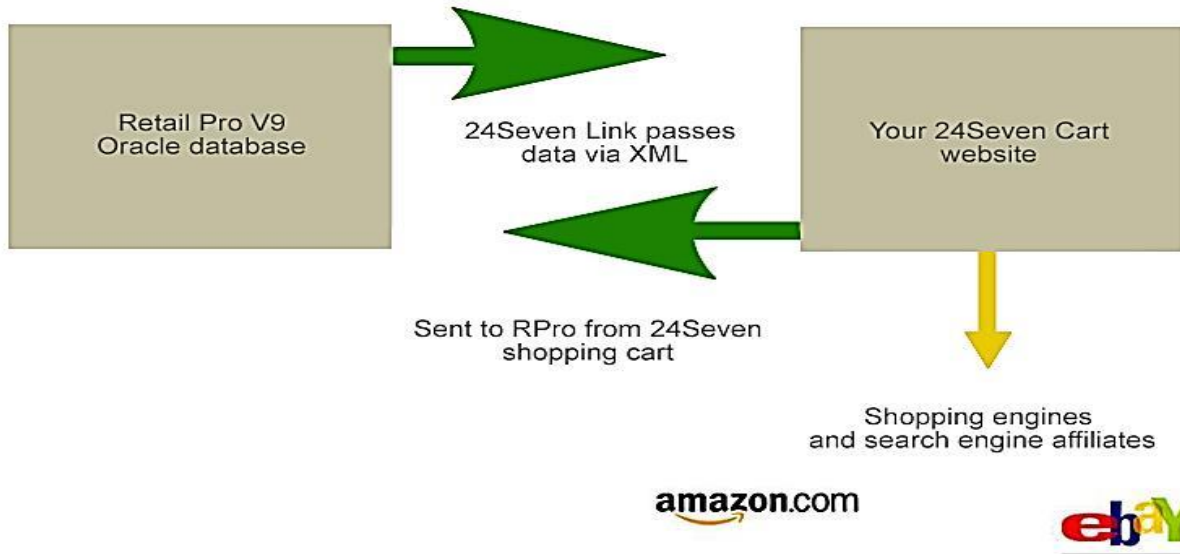


## Integration Details

The integration of 24Seven Cart with [Retail Pro V9](#) helps retailers manage their web store with the latest RetailPro POS application & physical store simultaneously and administering product data and inventory on both the platforms. The seamless integration between these technological platforms shares customer data & order information safely. This integration lets retailers create categories in the web store that are recognized with the products in the [Retail Pro](#) systems. Inventory and product information are uploaded from the [Retail Pro system](#) via 24Seven Link to the 24Seven Cart enabled web store.

Conversely, orders placed on the web stores consisting customers' information and the order data are downloaded safely to the Retail Pro V9 application for further processing. Catalog management, product creation, editing and its images are managed through admin panel of the web store. In addition to the product data uploaded via Retail Pro application, the 24Seven Cart catalog management section gives various options for displaying product descriptions, ratings and reviews, product specification, related product, personalization feature about the products.

## Integration Flow



## The 24Seven Link

The 24Seven Link is the web integrator that synchronizes the 24Seven Cart platform with the Retail Pro POS. It helps to share and update data on both the platforms concurrently about the products, its attributes, customer orders and inventory information.